



TRAIN TO TEACH WITH  
**LINCOLNSHIRE**  
TEACHING SCHOOL ALLIANCE  
**SCITT**

START YOUR  
**Teaching  
Career**  
WITH US!





*"It's been an amazing year observing, teaching, meeting the most amazing people and working with incredible children."*

*"The training days have been very informative, and have also supported confidence in my own abilities."*



100% of our trainees would recommend our programme to others

Welcome to Lincolnshire Teaching School Alliance SCITT. We are delighted that you are interested in teacher training.

LTSA SCITT (School Centred Initial Teacher Training) works in partnership across Lincolnshire to deliver high quality school-based primary and secondary teacher training.



### ABOUT LTSA SCITT

Lincolnshire Teaching School Alliance SCITT is a Primary and Secondary Initial Teacher Training provider in Lincolnshire offering:

- A bespoke training programme which blends QTS and PGCE
- School-based training from Day 1
- A caring, nurturing and supportive programme for trainees
- Training in a range of schools across Lincolnshire
- Dedicated mentor support
- A dynamic and supportive learning environment
- Strong partnership with the University of Lincoln, including access to the University's facilities
- Ongoing career opportunities and development

*"This route into teaching, gives you the opportunity to be a true part of a class. You really get to know the children in your class, build relationships with them and the staff within the school."*



*"It has been undoubtedly hard, but unbelievably rewarding and the sense of achievement now I am drawing to the end of the course is amazing."*



## LTSA SCITT TRAINING PROGRAMME

### Weekly training

Bespoke training programme jointly delivered by school-based and University-based professionals.

### SCITT and School Direct routes

A school-based training programme; trainees are in school setting from Day 1.

### Support

All trainees have access to a wide range of personal support throughout their SCITT journey.

### QTS and PGCE

Upon successful completion, trainees will achieve Qualified Teacher Status and PGCE.

We believe the best preparation for your career in teaching is to learn from experienced and dynamic practising teachers.

### Primary training

Delivered across a range of schools by highly skilled teachers. Trainees will work with phonics specialists throughout the year.

### Secondary training

Dedicated subject specialists will help you develop your subject knowledge for teaching.

### Very high employment

- the majority in Lincolnshire schools.

Preparation for employment included as part of the training programme.

### What our trainees say about our programme...

We interviewed two of our trainees from our 2018-19 programme and this is what they had to say:

#### What advice would you give to someone who is thinking of getting into teaching?

**A:** Be prepared to work. Be prepared for the ups and downs. Mostly you're changing a child's life, moulding them into what they will be in the future, this will stay with them forever.

**B:** Do it! I am so unbelievably grateful to LTSA for this training year and although it was a tough year, if you are dedicated about becoming a teacher then this is the course to help you get there!

#### In approximately 5 words, describe your experience of teacher training?

**A:** Life changing, very challenging, exhausting but hugely rewarding.

**B:** It's tough but overwhelmingly rewarding.

#### Why did you choose LTSA SCITT?

**A:** Level of support, how bespoke and unique the programme is to each individual. Massively appealing.

**B:** Tailored to you. In the classroom from day one with clear structure and continuity. LTSA provides full-on training experience.



### Central Lincoln Campus

The University of Lincoln's striking city centre campus provides a modern student-centred community. Based on the picturesque Brayford Pool waterfront, almost everything you'll need is either on campus or a short walk away.

## OUR PARTNERSHIP WITH THE UNIVERSITY OF LINCOLN

Our programme is delivered in collaboration with the University of Lincoln and the PGCE is an integral part of our programme.

The University of Lincoln awards the Postgraduate Certificate in Education (PGCE) with 60 Master's level credits upon successful completion of the programme.

Trainees are registered on the PGCE at the start of the year and also become students of the University. As a student of the University of Lincoln, you can access the same facilities as other university students.

### Award-winning Library

The University's Great Central Warehouse Library is open 24/7 for the majority of the academic year. The Library provides access to more than 250,000 journals and 400,000 print and electronic books, as well as databases and specialist collections.



### Supportive Community

Access to a range of support services including the Student Support Centre, Student Wellbeing Centre and the University's Disability Service.

### World-leading Research

More than half of the University of Lincoln's research was rated as world-leading or internationally excellent in the most recent Research Excellence Framework, and students may have the opportunity to engage in pioneering projects.

### Great Industry Links

The University of Lincoln is recognised as setting a blueprint for excellence in teaching and learning through its pioneering approach to working with industry.

### Career Support

The University of Lincoln's award-winning Careers & Employability team can support students throughout their time at Lincoln and beyond.

*(Association of Graduate Careers Advisory Services Award for Excellence in Employer Engagement (2016).)*

### A Top 20 University

The University of Lincoln is ranked 17th overall in the UK in the Guardian University Guide 2020, and is a top 50 UK university in the Complete University Guide 2020.



UNIVERSITY OF LINCOLN

### Lincoln Performing Arts Centre

A 450-seat theatre which regularly holds high-profile live performances.

## UNIVERSITY OF LINCOLN'S ON-CAMPUS SOCIAL SCENE

### The Platform, Tower Bars and The Swan

Students' Union-run venues to grab a bite to eat or a drink.

### Engine Shed

Lincoln's biggest late-night venue.

### University Sports Centre

A large selection of modern, specialist facilities. These include a fitness suite, double sports hall, squash, badminton and tennis courts, football and outdoor pitches, a dance studio, and saunas.

## OUR PARTNERSHIP AREA

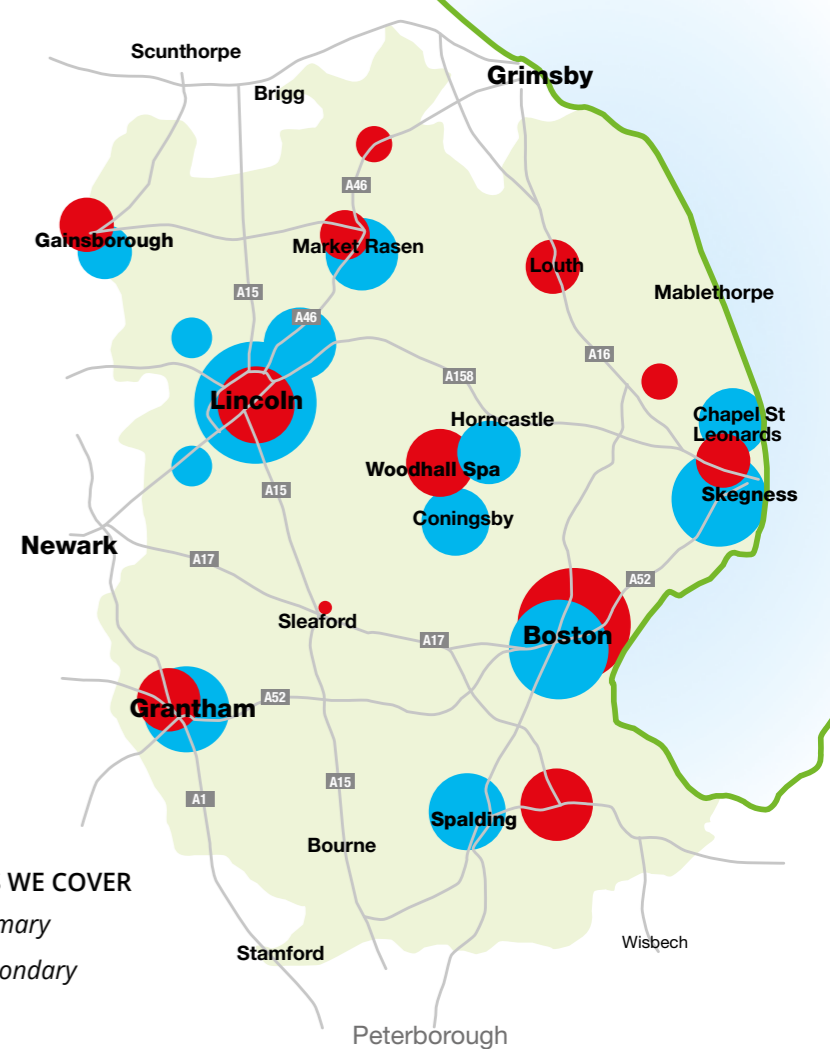
We work in partnership with a diverse range of schools across Lincolnshire, including:

- Academies
- Church of England schools
- Community schools
- Faith schools
- Maintained schools
- Mixed and single sex schools
- Selective schools
- Technology colleges

*"Fantastic training – engaging, informative and educational."*

Trainees on our programme will spend the academic year in one main school, with teaching experience in a second school.

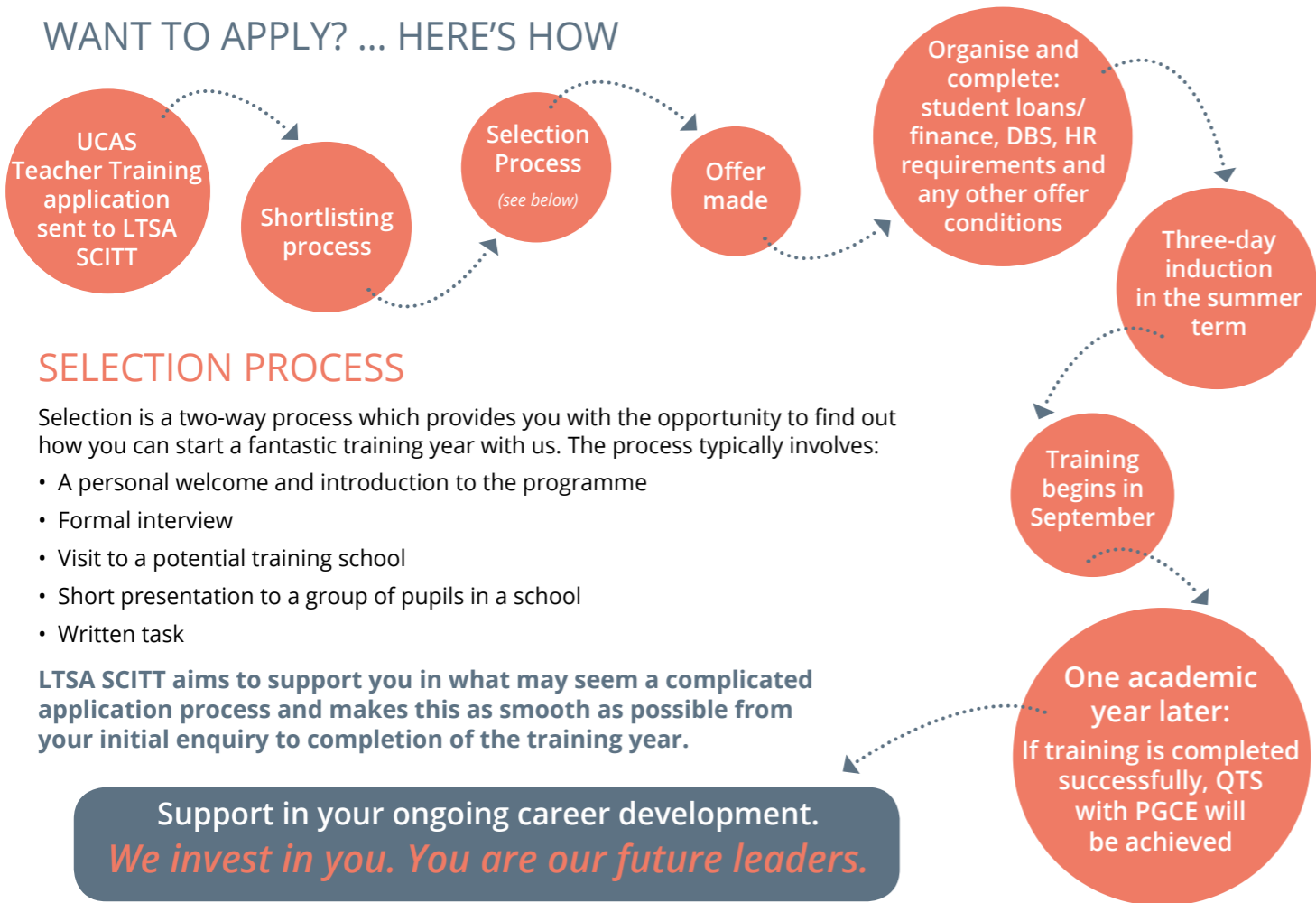
In addition they will have the opportunity to visit a wide range of schools through training days and enhanced visits.



### AREAS WE COVER

- Primary
- Secondary

## WANT TO APPLY? ... HERE'S HOW



## SELECTION PROCESS

Selection is a two-way process which provides you with the opportunity to find out how you can start a fantastic training year with us. The process typically involves:

- A personal welcome and introduction to the programme
- Formal interview
- Visit to a potential training school
- Short presentation to a group of pupils in a school
- Written task

**LTSA SCITT aims to support you in what may seem a complicated application process and makes this as smooth as possible from your initial enquiry to completion of the training year.**

Support in your ongoing career development.  
*We invest in you. You are our future leaders.*

## THE ESSENTIALS

### ENTRY REQUIREMENTS

- GCSE C/4 or above\* in Maths, English with the addition of Science for Primary
- UK Honours Degree\*

\* or equivalent

### FINANCE

- Fee-paying and salaried places are available in both phases
- The cost of the course is £9,250
- Tuition fee and maintenance loans are available through Student Finance England\*
- Bursaries and scholarships are available, depending on teaching subject and degree class\*

\* Subject to eligibility - Students are responsible for their travel, accommodation and general living costs.

*"Go into this with an open mind. I have been surprised how much I have enjoyed working with different year groups, and it has helped me to make decisions about where I would like to be based."*

*"It's a rollercoaster ride and you leave with feelings of success and personal fulfillment."*

Further details can be found on our website and the DFE Get into Teaching site. LTSA SCITT will support you in your teaching journey.





# LINCOLNSHIRE TEACHING SCHOOL ALLIANCE

For further details on Primary and Secondary teaching, please contact us:

01522 889297

[scittenquiries@lincstsa.co.uk](mailto:scittenquiries@lincstsa.co.uk)

[www.lincolnshiretsa.co.uk](http://www.lincolnshiretsa.co.uk)

 [@LtsaSCITT](https://twitter.com/LtsaSCITT)

