



NPQ Leadership Programmes 2020 - 2021

GEORGE SPENCER TEACHING SCHOOL ALLIANCE



George Spencer Academy is proud to be a licensee for the National Professional Qualifications (NPQ). We work closely with Lincolnshire Teaching Schools Together to provide NPQ training across our region.

NPQML

NPQSL

NPQH

NPQEL



'GSA's vision is evident throughout the management and development of NPQ programmes and they have established a creative learning community delivering consistently high-quality leadership programmes. Through the Spencer Academy Trust GSA works with several outstanding schools in the MAT, the Derby Research School, Teaching School and Maths Hub. There is a strong commitment to ensuring high quality delivery of the programmes in line with the reputation and moral purpose of GSA as a Teaching School.... The GSA NPQ delivery model has evolved and continuously improved because of the partnership born from the school-led system, based on shared commitment and passion for school improvement.'

Tribal QAA Performance Review Report – January 2020

Accredited NPQ provider



We offer four NPQs:

National Professional Qualification for Middle Leadership (NPQML) – £900 pp*

National Professional Qualification for Senior Leadership (NPQSL) – £1,200 pp*

National Professional Qualification for Headship (NPQH) – £1,950 pp*

National Professional Qualification for Executive Leadership (NPQEL) – £3,000 pp*

**DfE Scholarship Funding is available to cover course fees for eligible schools working in Opportunity Areas and areas defined in Achieving Excellence Areas as categories 5 and 6. This set of criteria will apply to schools applying before the end of this academic year. A new set of criteria will be published by the DfE from September 2020.*

The Blended Approach

Our blended approach of training offers maximum opportunity for participants to learn, reflect and apply their training. We offer face-to-face training days, an online learning platform for ongoing training and in-school coaches are offered training to wrap around the participants and support their success in the in-school projects.

New for 2020 -2021: In the current climate, we have converted many of our face to face days into online webinars, video resources and activities so that learning is flexible for schools. We anticipate that this will be the offer for the Autumn term and hope to integrate some face-to-face learning in the Spring and Summer terms.

Expertise from Across the School-led System

The NPQ programmes offer full coverage of the DfE Content and Assessment Framework drawing on skills and knowledge of our expert facilitators, all experienced school leaders, system leaders (SLEs, LLEs and NLEs) and Teaching School leads.

Our programme also integrates specialist expertise as a fundamental to our offer provided by **Inclusive Teaching School Alliance** at St Giles Special School and **Kyra and Derby Research Schools**.



The 2020-2021 Offer

This year we are offering two start dates. DfE Funding has been confirmed for schools starting before the end of this academic year. There will be a new set of criteria in place from September 2020 which has not yet been shared. Therefore, we want to offer schools the chance to select which start date they wish to proceed with: **July 2020** or **October 2020**. Induction Events will take place for both cohorts at the start dates through webinar interfaces and online learning opportunities.

If you have any questions, please do not hesitate to get in touch with the team.

Email: courses@george-spencer.notts.sch.uk

Accredited NPQ provider



Meet the Facilitators

'The broad experience of the partnership network, working with outstanding schools in the MAT, George Spencer Teaching School, co-delivering with Lincolnshire Teaching Schools Together, and the Kyra and Derby Research Schools, and Maths Hub ensures that the programmes include the most relevant and up to date research. The strength of this contributes to the wealth of knowledge of best practice and school improvement which is integrated into the NPQ programmes delivered by George Spencer Academy.'

Tribal QAA Performance Review Report – January 2020

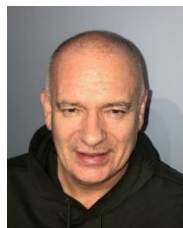
George Spencer Hub



Angela O'Brien
NPQEL Strand Lead
Director of Primary Education and NLE



Fraser Mitchell
NPQEL Strand Lead
Director of Secondary Education and NLE



Peter Monk
NPQH Strand Lead
Headteacher, Friesland School



Lorraine Tonks
NPQH Strand Lead
Principal, Chetwynd Primary Academy LLE, George Spencer TSA



Craig Patterson
NPQSL Strand Lead
Deputy Head, Friesland School



Kate Green
NPQSL Strand Lead
Executive Principal, Portland Spencer Academy and Glenbrook Primary LLE, George Spencer TSA



Kirsty Ryan
NPQML Strand Lead
Principal, Wyndham Primary Academy LLE, George Spencer TSA



Ian Armstrong
NPQML Strand Lead
Deputy Headteacher, Ivy House School and SLE, inclusive Teaching School Alliance

Lincoln Hub in collaboration with Lincolnshire Teaching Schools Together



Andy Chisholm
Director of Teaching School, Lincoln TSA



Doug Drake
Senior School Improvement Lead, Lincoln TSA



Helen Barker
Head of Kyra Teaching School Alliance & School Improvement



Mary-Alice Lloyd
Educational Consultant

Accredited NPQ provider



Booking Form Links

George Spencer Cohort

[National Professional Qualification for Middle Leadership \(NPQML\) – £900 pp*](#)

[National Professional Qualification for Senior Leadership \(NPQSL\) – £1,200 pp*](#)

[National Professional Qualification for Headship \(NPQH\) – £1,950 pp*](#)

[National Professional Qualification for Executive Leadership \(NPQEL\) – £3,000 pp*](#)

Lincolnshire Cohort offered in collaboration with Lincolnshire Teaching Schools Together

[National Professional Qualification for Middle Leadership \(NPQML\) – £900 pp*](#)

[National Professional Qualification for Senior Leadership \(NPQSL\) – £1,200 pp*](#)

[National Professional Qualification for Headship \(NPQH\) – £1,950 pp*](#)

Application Deadlines

	JULY 2020	OCTOBER 2020
NPQML AND NPQSL	8 th July	25 th September
NPQH		
APPLICATION FORM	8 th July	25 th September
GATEWAY ASSESSMENT	8 th June – 6 th July	25 th August – 25 th September
NPQEL		
GSA BOOKING FORM	8 th July	25 th September
STATEMENT OF APPLICATION	8 th July	25 th September

Contact Details

We are here to answer questions and offer support – please don't hesitate to get in touch.



Tammy Elward
tammyelward@satrust.com
Director of George Spencer Teaching School
Director of the Derby Research School



Lisa Wilshere
wilshere@george-spencer.notts.sch.uk
NPQ Coordinator
George Spencer Teaching School

Accredited NPQ provider

